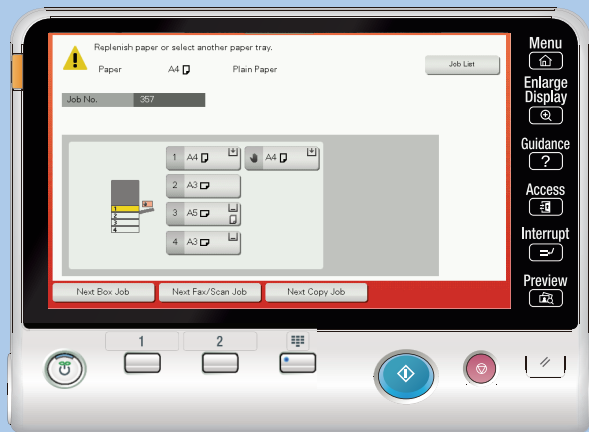


Out of Paper



If paper runs out during printing, you will see the screen shown below.



Load paper into the tray indicated by the 'Yellow' highlight and your printing will continue.

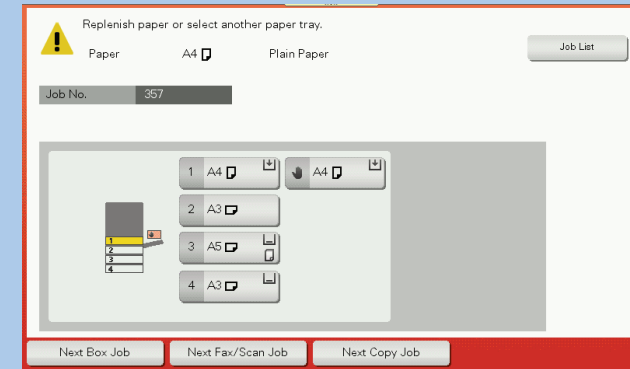
However; if you cannot find any paper, then it's important to cancel the job. Shown in '**Cancel Print Job**' opposite.

NOTE: Failure to load paper to complete your print job, or failure to cancel the job, will result in another user having access to your confidential documents.

Cancel Print Job

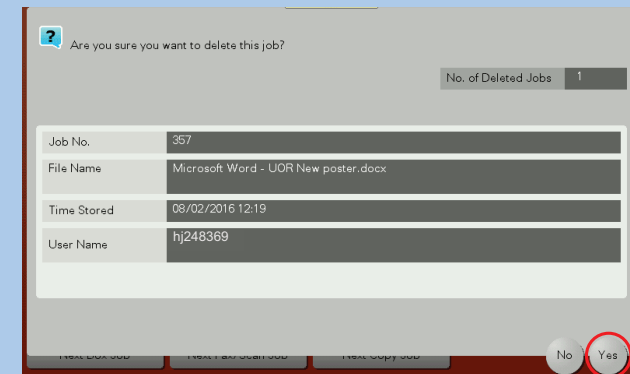


To cancel a Print Job:



Press the '**Reset**' key  on the Control Panel

You will see the screen shown below:



Press the '**Yes**' to cancel the job.

Home Screen



If paper runs out during printing, you will see the screen shown below.



Load paper into the tray indicated by the 'Orange' highlight and your printing will continue.

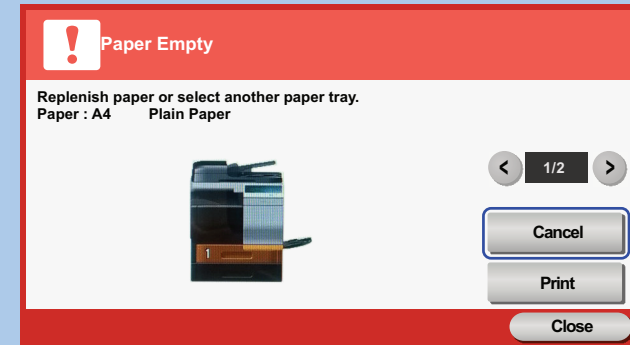
However; if you cannot find any paper, then it's important to cancel the job. Shown in '**Cancel Print Job**' opposite.

NOTE: Failure to load paper to complete your print job, or failure to cancel the job, will result in another user having access to your confidential documents.

Cancel Print Job

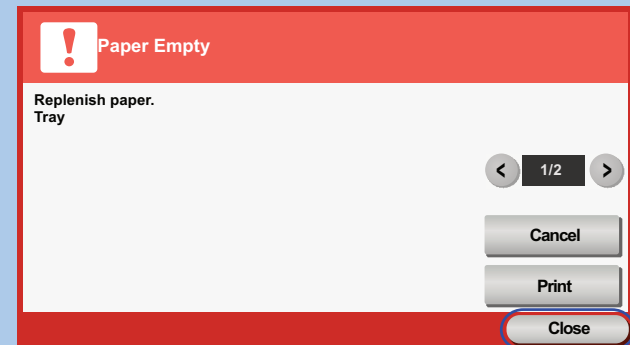


To cancel a Print Job:



Press the '**Cancel**' on the screen

You will see the screen shown below:



Press the '**Close**' on the screen.